

# SD Card Reader User's Manual

## Installation guide for Windows 98/98SE

1. Please insert the CD into CD-ROM.
2. Please plug the Card Reader into the USB port and Windows 98 will detect it automatically.
3. The pop-up window "Add New Hardware Wizard" will come out. Please follow the instruction to continue.

a:



b:



c: Please specify a location in "CD-ROM\SD\WIN98 "Folder.



d:



e:



f:



g:



h: Please specify a location in "CD-ROM\SD\WIN98 "Folder.



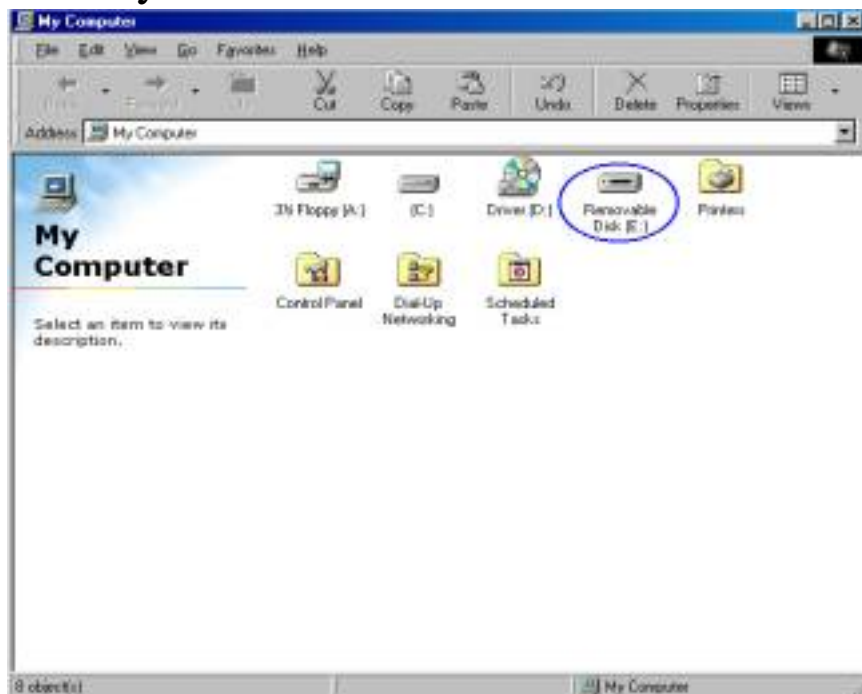
i:



j:



k: Then you will see 1 extra icon in your "My Computer" of your computer.  
Now you can start to use the Card Reader.



## Installation guide for Windows ME/2000/XP

You don't need to install any driver if your computer's O/S is Windows ME/2000/XP. Please just plug your Card Reader into the USB port. Then you will see 1 extra icon in your File Manager of your computer. Now you can start to use the Card Reader.

## **Installation guide for Mac OS 9.X/10.X and later versions :**

You don't need to install any driver. Please just plug the reader into the USB port.

When you insert CF Card, you will see an "untitled"HDD icon in the desktop. Then you can start to use the Card Reader.